

| NO. | Franklin County | FG-FGA | FT-FTA | REB | P | TP | A |
|---------------|-----------------|--------------|-------------|-----------|----------|-----------|----------|
| 24 | Ronnie Goins | 4-8 | 2-6 | 3 | 1 | 10 | 0 |
| 44 | Michelle Cox | 0-0 | 0-0 | 0 | 0 | 0 | 0 |
| 30 | Sally Zimm'man | 4-8 | 0-0 | 2 | 1 | 8 | 2 |
| 40 | Janie Howard | 1-3 | 0-0 | 2 | 1 | 2 | 4 |
| 20 | Kelly King | 5-6 | 1-2 | 0 | 0 | 1 | 1 |
| 42 | Paula Janes | 1-1 | 0-2 | 9 | 2 | 2 | 0 |
| 12 | Kitty Hines | -DNP- | | | | | |
| 3 | Ann Hulette | -DNP- | | | | | |
| 14 | Marcie Rhody | -DNP- | | | | | |
| 10 | Darla White | -DNP- | | | | | |
| 2 | Karen Wilkins | -DNP- | | | | | |
| 5 | Jenny Caudele | -DNP- | | | | | |
| | | - | - | 328 | | | |
| TOTALS | | 15-26 | 3-10 | 19 | 5 | 33 | 7 |

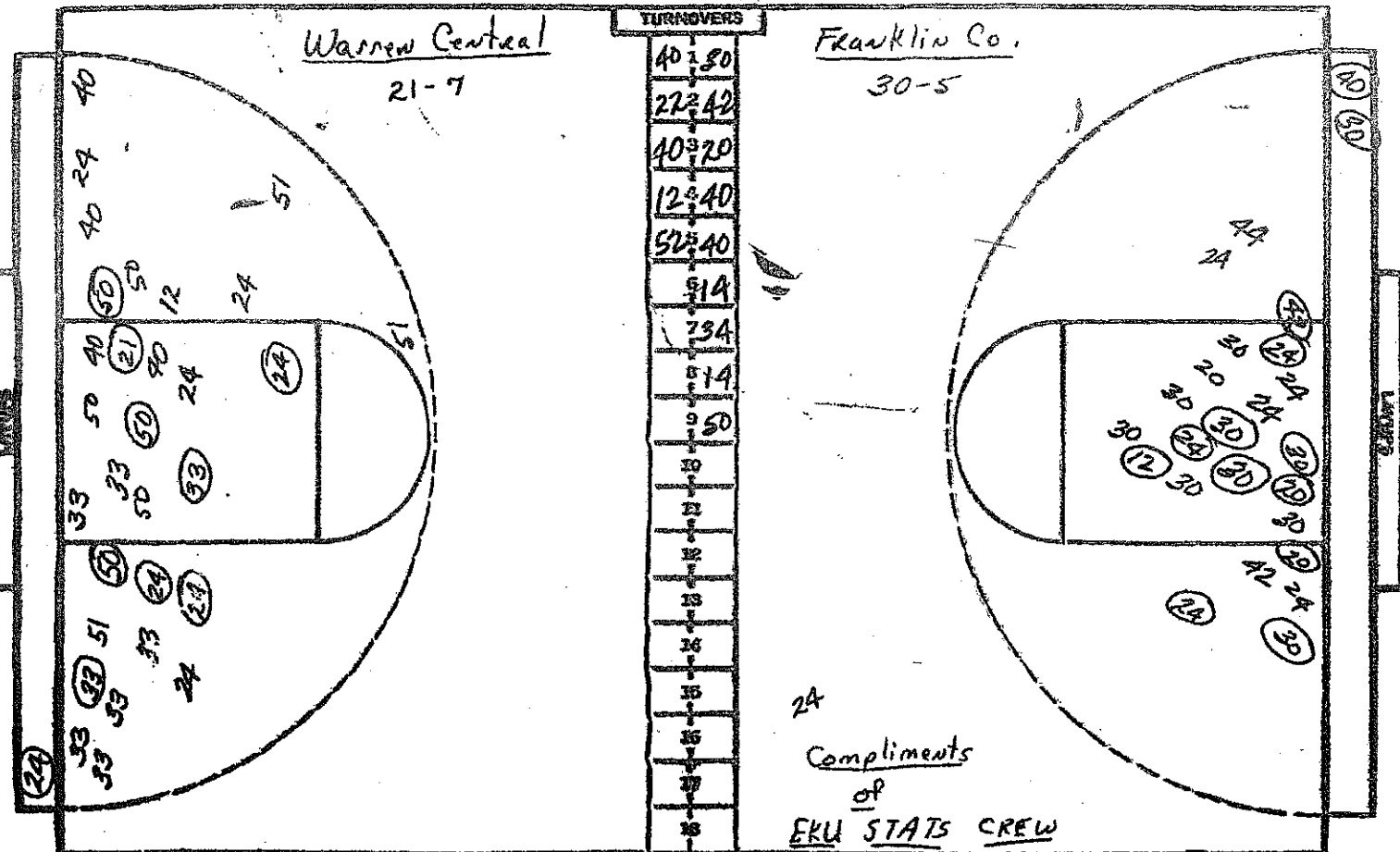
| NO. | Warren Central | FG-FGA | FT-FTA | REB | P | TP | A |
|---------------|-------------------|--------------|------------|-----------|----------|-----------|----------|
| 22 | Sherry Cox | 0-2 | 0-0 | 2 | 1 | 0 | 1 |
| 51 | Sue Sadler | 3-7 | 1-2 | 3 | 0 | 7 | 1 |
| 50 | Gay Carlson | 3-5 | 0-0 | 4 | 2 | 6 | 0 |
| 24 | Clemete Haskins | 6-8 | 0-0 | 5 | 2 | 12 | 1 |
| 33 | Tammy Campbell | 1-7 | 1-2 | 0 | 0 | 3 | 3 |
| 42 | Cindy Siddens | -DNP- | | | | | |
| 10 | Linda Johnson | 0-0 | 0-0 | 0 | 0 | 0 | 0 |
| 31 | Diane Hazel | -DNP- | | | | | |
| 52 | Kelly Worthington | -DNP- | | | | | |
| 12 | Leslie Ford | -DNP- | | | | | |
| 21 | Vicki Ramsey | -DNP- | | | | | |
| 40 | Rita Craighead | 0-0 | 0-0 | 0 | 2 | 0 | 1 |
| | | - | - | | | | |
| | | - | - | 208 | | | |
| TOTALS | | 13-29 | 2-4 | 16 | 8 | 28 | 7 |

PERCENTS 57.7 30.0 1 TEAM REBOUNDS (NOT IN TOTAL)

PERCENTS 44.8 50.0 0 TEAM REBOUNDS (NOT IN TOTAL)

Franklin Co. Warren Central
14- 14-

SCORED BY HALVES
OFFICIALS: John Radjwan and Cathy Stovall
ATTENDANCE: EST. 4,100



| NO. | Warren Central | FG-FGA | FT-FTA | REB | P | TP | A |
|---------------|-----------------|--------------|------------|-----------|-----------|-----------|-----------|
| 22 | Sherry Cox | 0-2 | 0-0 | 2 | 1 | 0 | 2 |
| 51 | Sue Sadler | 3-9 | 1-2 | 5 | 3 | 7 | 2 |
| 50 | Gay Carlson | 6-11 | 0-0 | 9 | 5 | 12 | 0 |
| 24 | Glemete Haskin | 11-17 | 0-0 | 7 | 3 | 22 | 1 |
| 33 | Tammy Cambell | 3-15 | 2-4 | 1 | 1 | 8 | 3 |
| 42 | Cindy Siddens | 0-0 | 0-0 | 0 | 1 | 0 | 0 |
| 10 | Linda Johnson | 0-1 | 0-0 | 0 | 0 | 0 | 0 |
| 31 | Diane Hazel | 0-0 | 2-3 | 1 | 0 | 2 | 0 |
| 52 | Kelly Workman | 0-0 | 0-0 | 1 | 0 | 0 | 0 |
| 12 | Leslie Ford | 0-1 | 0-0 | 1 | 1 | 0 | 0 |
| 21 | Vicki Ramsey | 1-1 | 0-0 | 1 | 1 | 2 | 0 |
| 40 | Rita Craighhead | 0-3 | 0-0 | 1 | 3 | 0 | 2 |
| | | - | - | | | | |
| | | - | - | 208 | | | |
| TOTALS | | 24-60 | 5-9 | 31 | 19 | 53 | 10 |

PERCENTS

40.0 55.6 0

TEAM REBOUNDS (NOT IN TOTAL)

PERCENTS

52.8 52.0 1

TEAM REBOUNDS (NOT IN TOTAL)

| NO. | Franklin County | FG-FGA | FT-FTA | REB | P | TP | A |
|---------------|-----------------|--------------|--------------|-----------|-----------|-----------|-----------|
| 24 | Connie Goins | 7-16 | 4-9 | 13 | 2 | 18 | 0 |
| 44 | Michelle Cox | 0-1 | 0-0 | 3 | 0 | 0 | 1 |
| 30 | Sally Zimmerman | 9-18 | 5-5 | 9 | 3 | 23 | 2 |
| 40 | Janie Howard | 2-4 | 2-4 | 2 | 2 | 6 | 8 |
| 20 | Kelly King | 7-10 | 1-2 | 1 | 2 | 15 | 1 |
| 42 | Paula Janes | 2-3 | 0-2 | 11 | 2 | 4 | 1 |
| 12 | Kitty Hines | 1-1 | 1-2 | 0 | 1 | 3 | 0 |
| 34 | Ann Mullette | 0-0 | 0-0 | 0 | 0 | 0 | 0 |
| 14 | Marcie Rhody | 0-0 | 0-1 | 2 | 0 | 0 | 0 |
| 10 | Darla White | 0-0 | 0-0 | 0 | 0 | 0 | 0 |
| 22 | Karen Wilkins | 0-0 | 0-0 | 0 | 0 | 0 | 0 |
| 50 | Jenny Caudele | 0-0 | 0-0 | 0 | 0 | 0 | 0 |
| | | - | - | | | | |
| | | - | - | 408 | | | |
| TOTALS | | 28-53 | 13-25 | 45 | 12 | 69 | 13 |

SCORE BY HALVES:

OFFICIALS: John Radjunas and Cathy Stovall

ATTENDANCE: 4,100 est.

2nd Session